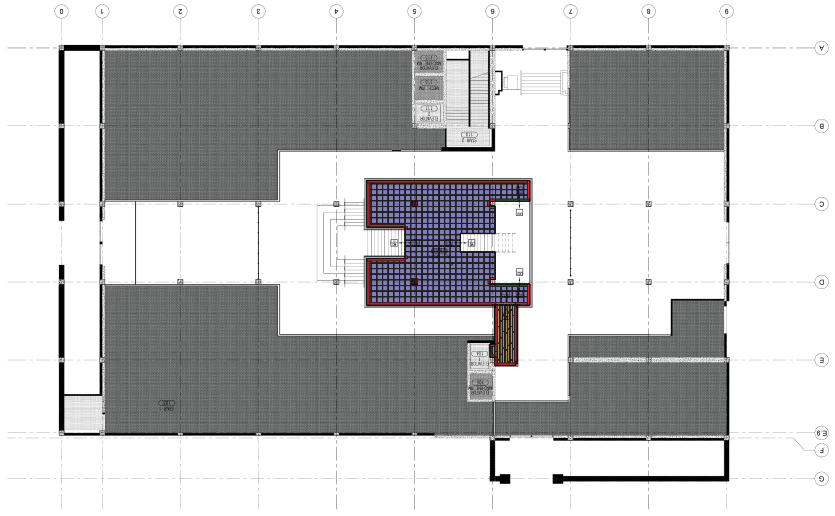


AMAZON - SANTA BARBARA MEZZANINE LEVEL

26 January 2019 : AMAZON - SANTA BARBARA_MEZZANINE.est
Summary Report

area	net	gross	base
CPT-3 INTERFACE, FLOOR, SKYFALL, 21-1480 FLINT (50cm X 50cm - monolithic install) : 1'8" X 1'8" [split 20:full 510] [tiledge= 1573'2"]	148.81sy	160.50sy	520 >> 1'8" 160.50sy
RF-1 MOHAWK, LINEATE, STRIATED 988 (9"x59" plank) : 4'11"x9.00" [split 0:full 44] [tiledge= 173'6"]	120.17sf	129.07sf	35 >> 9.00"x4'11" 129.07sf
B-1 4" ROPPE RESILIENT COVE BASE, BLACK BROWN 194	0.00sf	0.00sf	216'10"
FT-1 CARPET TO CONCRETE TRANSITION, ROPPE #38, BLACK BROWN 193	0.00sf	0.00sf	20'4"
FT-2 CARPET TO RESILIENT TRANSITION, SCHLUTER SCHEINE ALUMINUM A60	0.00sf	0.00sf	5'11"
Plan Total	162.17sy		

Scale 1:680 (original drawing scale 1:96)



MEZZANINE - FINISH PLAN

LEGENDA

GENERAL NOTES

SHEET NOTES MAY NOT APPLY TO THIS SHEET

PROJEKT NO. 19010117

PROJEKT: MEZZANINE

PLAN: MEZZANINE FINISH

PROJEKTANT: SABA CONSULTANTS

DATE: 01.17.2019

DESIGNER: SABA CONSULTANTS

DATE: 01.17.2019

PROJECT NO. 19010117

PROJEKT: MEZZANINE

PLAN: MEZZANINE FINISH

PROJEKTANT: SABA CONSULTANTS

DATE: 01.17.2019

DESIGNER: SABA CONSULTANTS

DATE: 01.17.2019